

# ROSCOE PRIMARY SCHOOL

## NEWSLETTER 29.11.24



### WELCOME

Dear parents and carers,

Thank you to Reverend Will who has been into Roscoe to deliver our whole school assembly on Advent. We sang my Lighthouse and talked about preparing things for different events.

Our rehearsals for Christmas performances have begun this week. Please see the information posted on Dojo about all Christmas events that are in the diary and will be happening over the next few weeks.



### CHRISTMAS JUMPER DAY

Ahead of Christmas Jumper Day on the **12th December**, if you have any preloved Christmas jumpers that you are willing to offer to a new home and would like to pass them into the office.

Depending on the amount of donations, we can arrange a Christmas Jumper swap next week. We will communicate this out to parents if we have a good amount donated.

### RECEPTION ADMISSIONS 2025

- Please note for Reception 2025 Admissions, parent/carers of children who turn 4 before 31st August 2025 should apply on the Liverpool Council website for their child's Reception place BEFORE 15TH JANUARY 2025.

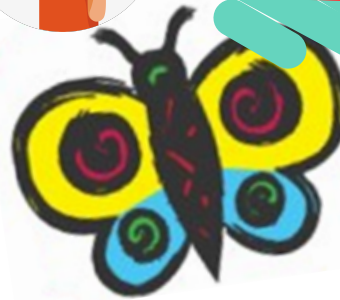
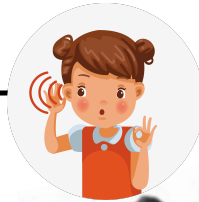
Please click on the link below

<https://liverpool.gov.uk/schools-and-learning/school-admissions/>

## THE ROSCOE WAY

Isabella has shown ***‘being responsible’*** this week in nursery by helping another child prepare for the day, hanging up their coat and bag and finding their name card.

Well done Isabella!



## STAR OF THE WEEK

Reception - Albie

Year 1 - Ewa

Year 2 - Michael

Year 3 - Doha

Year 4 - Matilda

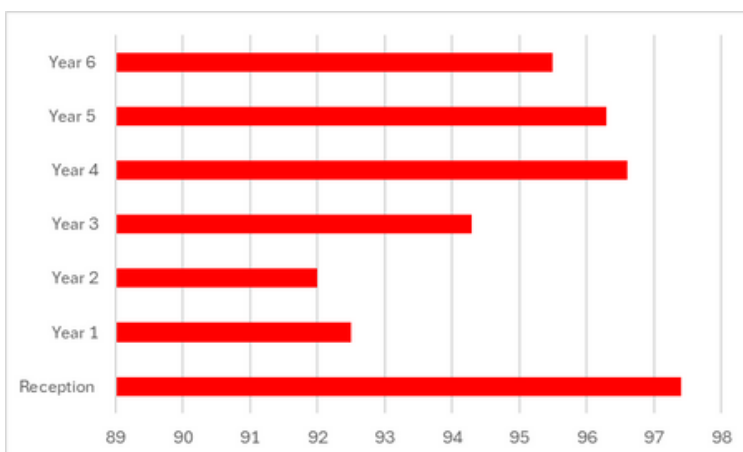
Year 5 - Gubran

Year 6 - Macy-Lei

## ATTENDANCE

This week's attendance figure has dropped to a disappointing 94.7%. We have posted our winter virus letter at the bottom of this newsletter to remind parents of how we can support you in getting your child to school over the winter season. Please note that the Senior Leadership Team can administer prescribed medicines with written parental consent. Consent forms are available at the office.

## YEAR GROUP - WEEKLY ATTENDANCE



This week's winners!





# HAPPY BIRTHDAY TO YOU



Josie - Reception

Mason - Year 1

Dorathy - Year 3

Patrick - Year 5

Allison - Year 5

Jenson - Year 6

## UPCOMING EVENTS

### 2nd-5th December

Book Fair

### 5th December

Year 3 World  
Museum Trip

### 12th December

Christmas Jumper  
Day

### 13th December

ASD Coffee Morning

### 13th December

Church Service

### 16th December

Reception & Nursery  
Christmas Show

### 17th December

Year 5 & Year 6  
Christmas Show

### 18th December

Year 3 and Year 4  
Christmas Show

### 19th December

Year 1 And Year 2  
Christmas Show

Please wrap up warm and have a lovely weekend.

*Mrs Jones and the the Roscoe Team.*

# ROSCOE PRIMARY SCHOOL

## OPEN EVENING

WEDNESDAY 11TH DECEMBER

2024

3.45PM -  
5.00PM



**WALK AROUND OUR CLASSROOMS FROM NURSERY TO  
YEAR 6**

**SPECIAL WALK AROUND OUR NEW FOREST AREA**

**SAMPLE MENU ITEMS IN THE SCHOOL CANTEEN**

**FESTIVE TREATS & SURPRISES ALONG THE WAY**

**Northern  
Schools  
Trust**

[www.roscoeliverpool.co.uk](http://www.roscoeliverpool.co.uk)  
0151 226 1536





*As part of Northern Schools Trust*

*Alison Road, Liverpool, L13 9AD Tel: 0151 226 1536*

*Email: [schooladmin@roscoeprimary.co.uk](mailto:schooladmin@roscoeprimary.co.uk) [www.roscoeliverpool.co.uk](http://www.roscoeliverpool.co.uk)*

*Head Teacher: Mrs Paula Jones*

Friday 15th November 2024

Dear Parents/carers,

As we approach the season of winter viruses, we wanted to share some attendance reminders with you.

- Please contact the school office (0151 226 1536) on the first day of your child's absence. It is important that you report the symptoms that your child is experiencing.
- If you are unsure whether your child is 'too ill' to stay off school, please speak to Mrs T Jones or Mr Backhouse at the school office for advice. You can also refer to the NHS document '[Is my child too ill for school?](#)'
- The school office may request medical evidence in order to authorise your child's absence. Please note that unauthorised absences may result in a Penalty Warning Notice Period given by the Local Authority.
- School gates open at 8:35am. School doors open at 8.40am for learning to begin at 8.45am. Please arrive promptly to ensure children benefit from the maximum amount of learning time available.
- Aim to give the School Office at least 24 hours notice where your child will need to be collected early for appointments, but ideally book these outside of school hours where possible.

Our whole school target for attendance is 97%. Please continue to work with us to make school attendance the best it can be. Good attendance is linked to improved educational outcomes for children.

If you have any issues relating to attendance, please do not hesitate to get in touch with school for support.

Kind regards

Mrs P. Jones

Headteacher



# Christmas Menu

## TRADITIONAL OPTION

Traditional roast turkey, carrot and turnip, sprouts, parsnips, pigs in blankets, cauliflower cheese, pork stuffing, roast potatoes and yorkshire pudding.



## HALAL OPTION

Halal turkey, carrot and turnip, sprouts, parsnips, cauliflower cheese, vegetable stuffing, roast potatoes and yorkshire pudding.



## VEGETARIAN OPTION

Brie & caramelised onion tartlet carrot and turnip, sprouts, parsnips, cauliflower cheese, vegetable stuffing, roast potatoes and yorkshire pudding.



## DESSERTS

Christmas Tree ice-cream  
Mince pie with cream

